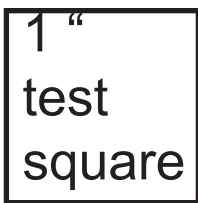




LIFE SEW SAVORY



Size	2T	3T	4T	5T	6T
Chest in Inches	20	21	22	23	24

LIFE SEW SAVORY

Sweet Rose Dress

Full picture tutorial here:

<http://nap-timecreations.com/2017/02/girls-gathered-tunic-dress-free-pattern.ht>

Size 2-10 Girls

Needs:

1-2 yards woven fabric

3 buttons/snaps

12 inches 1/4" elastic



Skirt Cutting Chart

For easy size cut width of fabric {ie. 44"} x suggested length {or measure yourself} x 2.

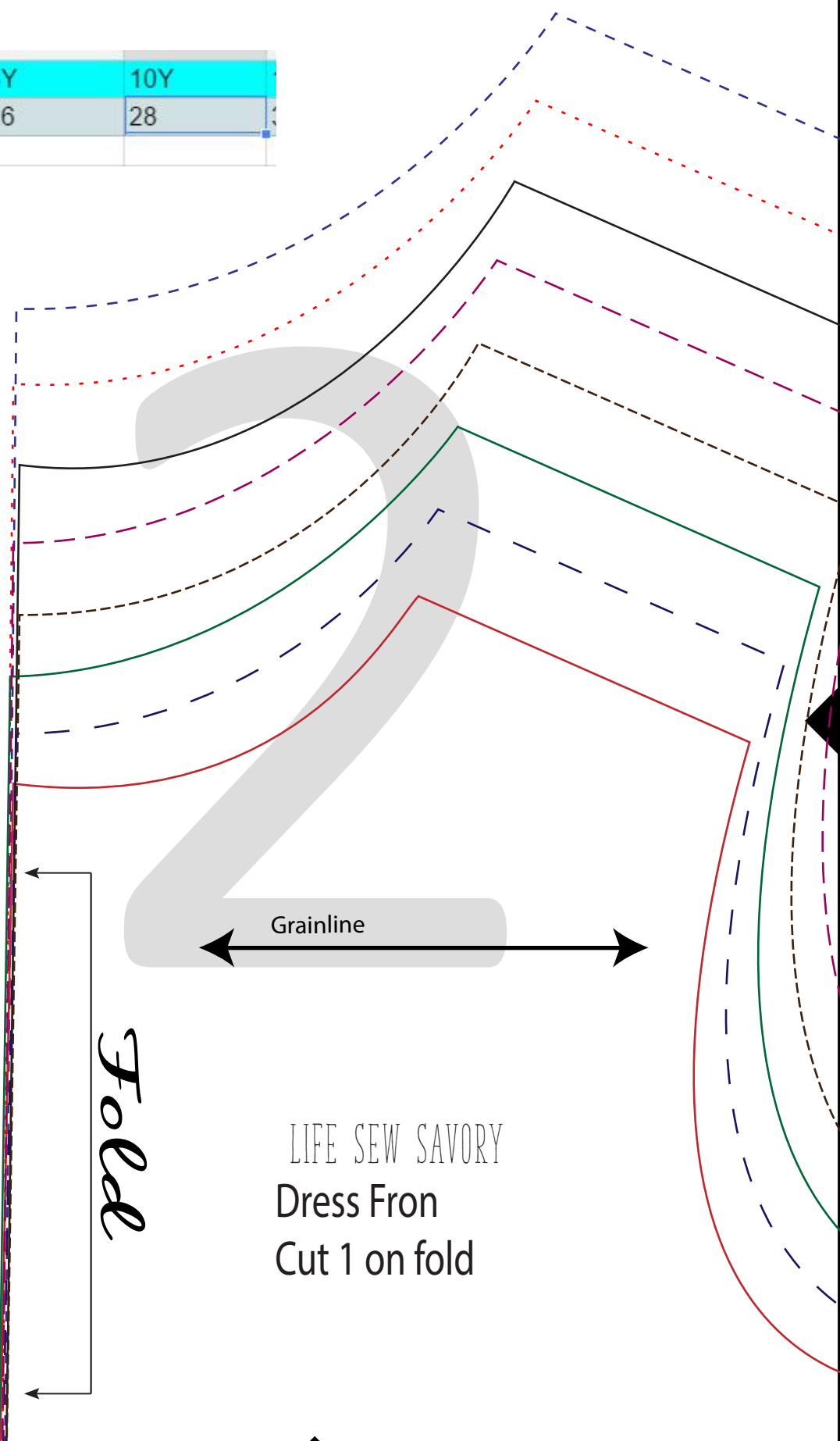
2Y	3Y	4Y	5Y	6Y	8Y	10Y
13"	14.5"	16"	18"	20"	22"	25"

Size Key

- 2
- 3
- 4
- 5
- 6
- 7
- 8
- 10

7Y	8Y	10Y
25	26	28

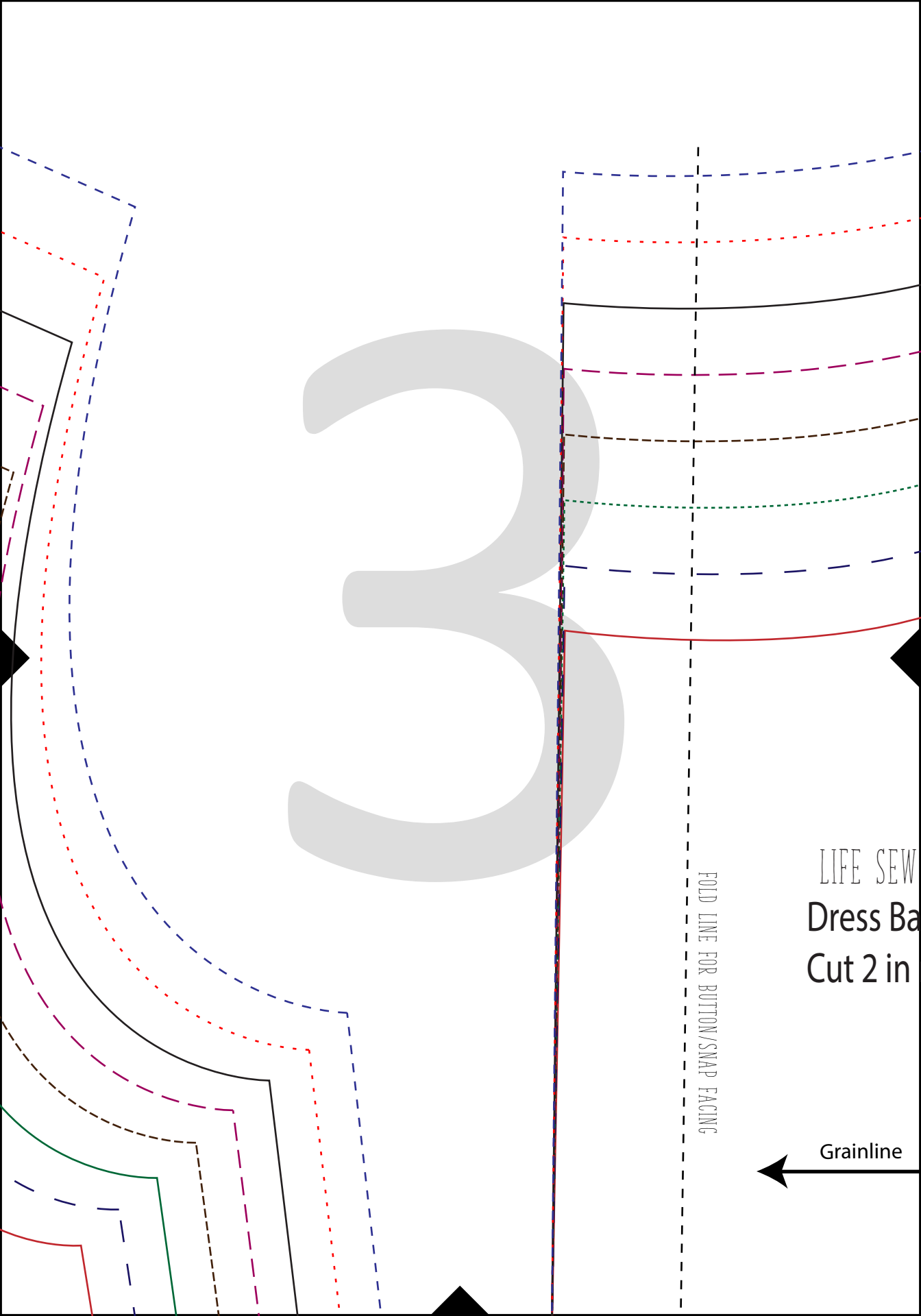
ml



Fold

Grainline

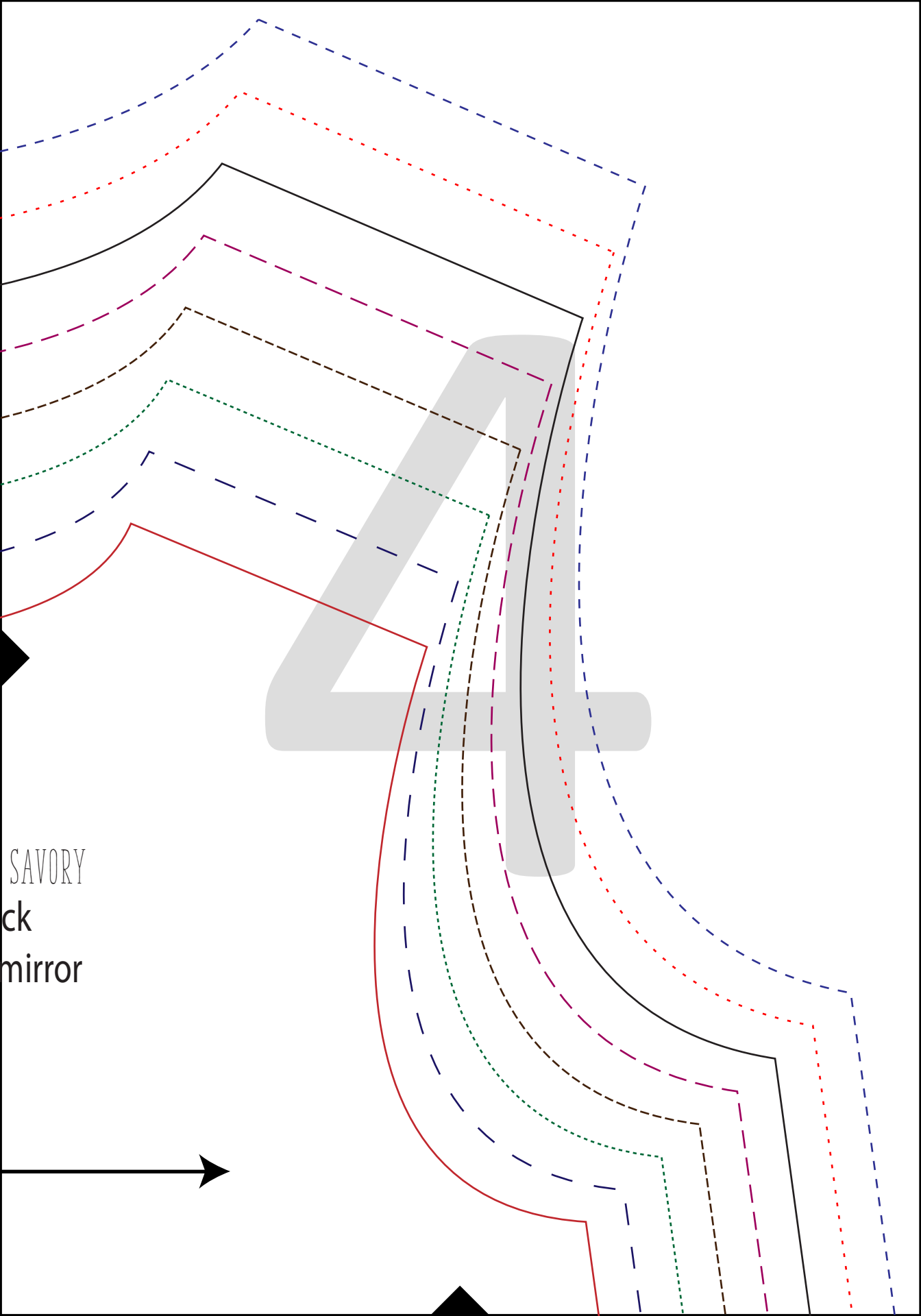
LIFE SEW SAVORY
 Dress Fron
 Cut 1 on fold



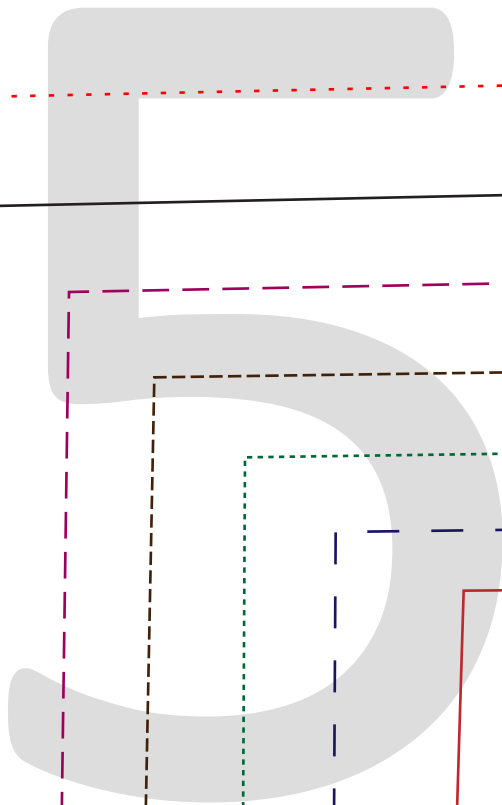
LIFE SEW
Dress Bodice
Cut 2 in

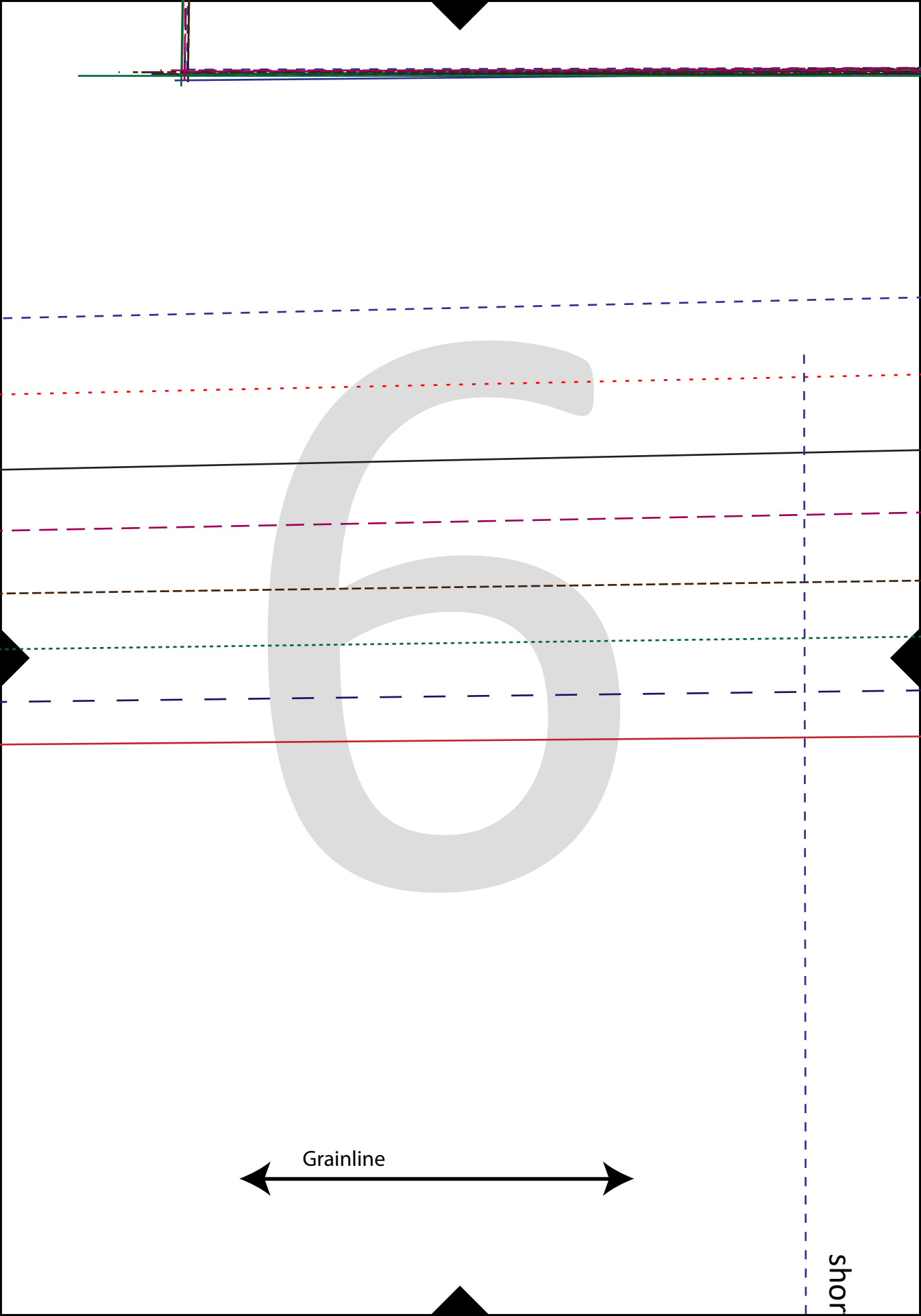
FOLD LINE FOR BUTTON/SNAP FACING

Grainline



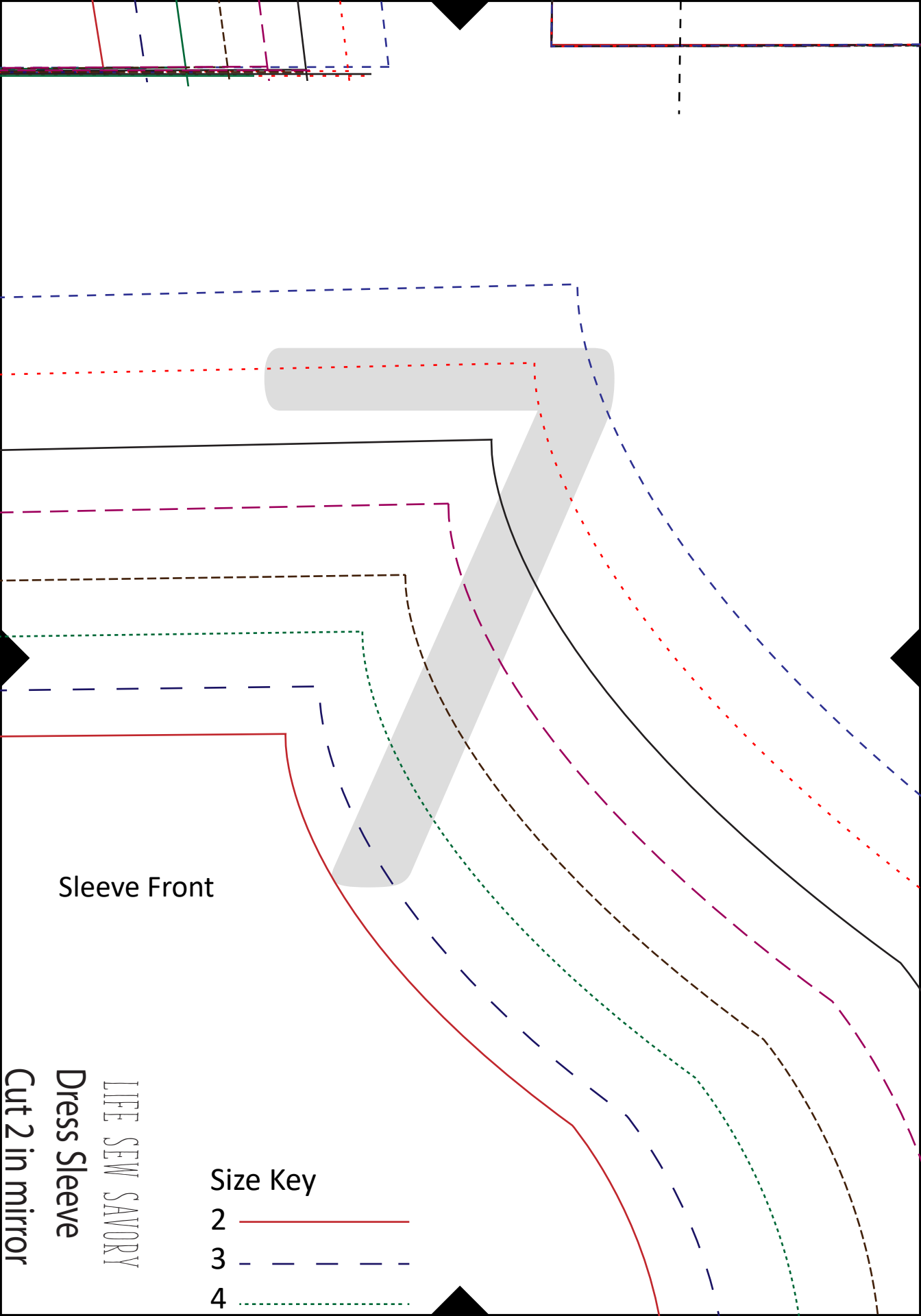
SAVORY
ck
mirror





Grainline




short

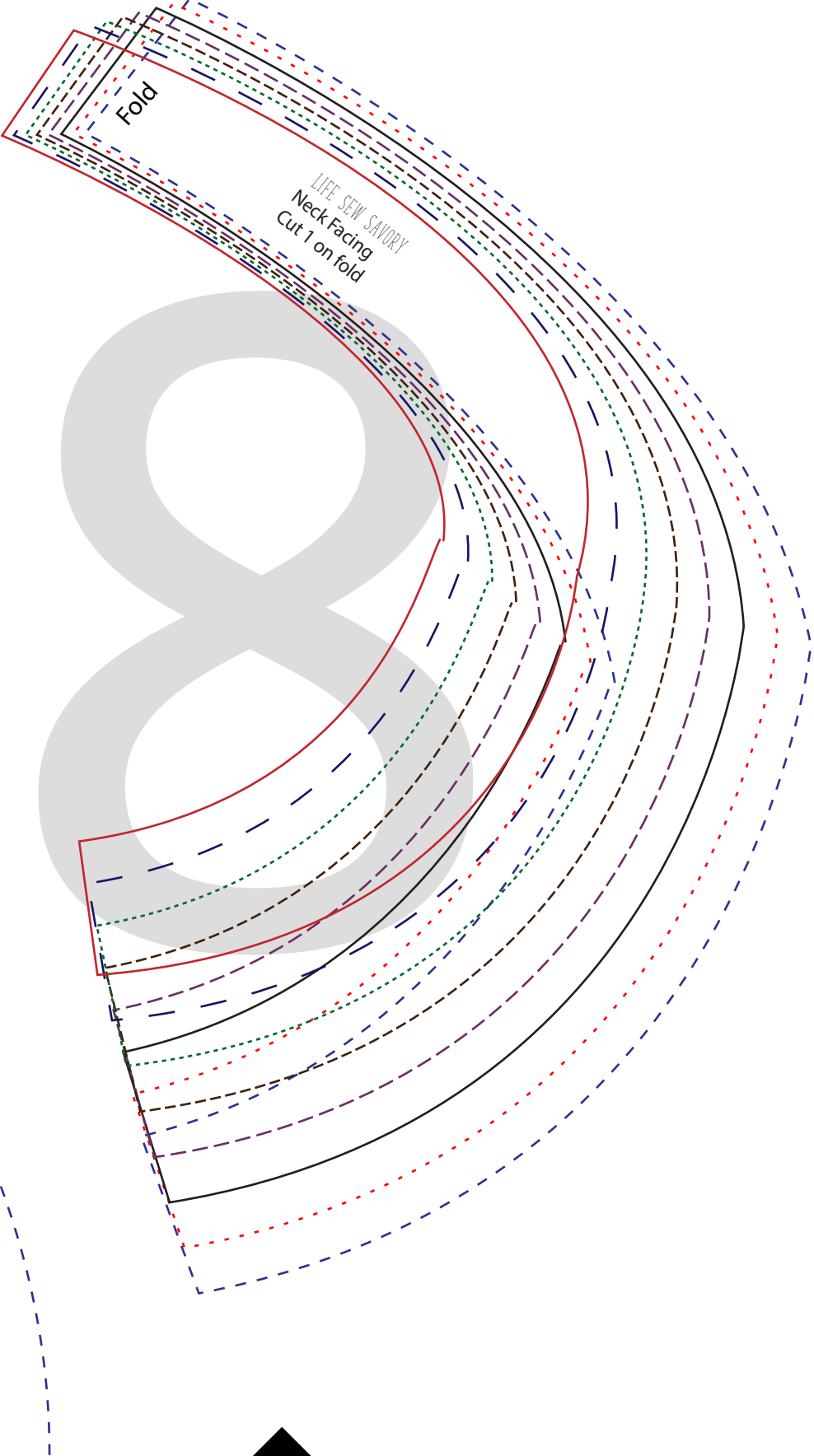


Sleeve Front

LIFE SEW SAVORY
Dress Sleeve
Cut 2 in mirror

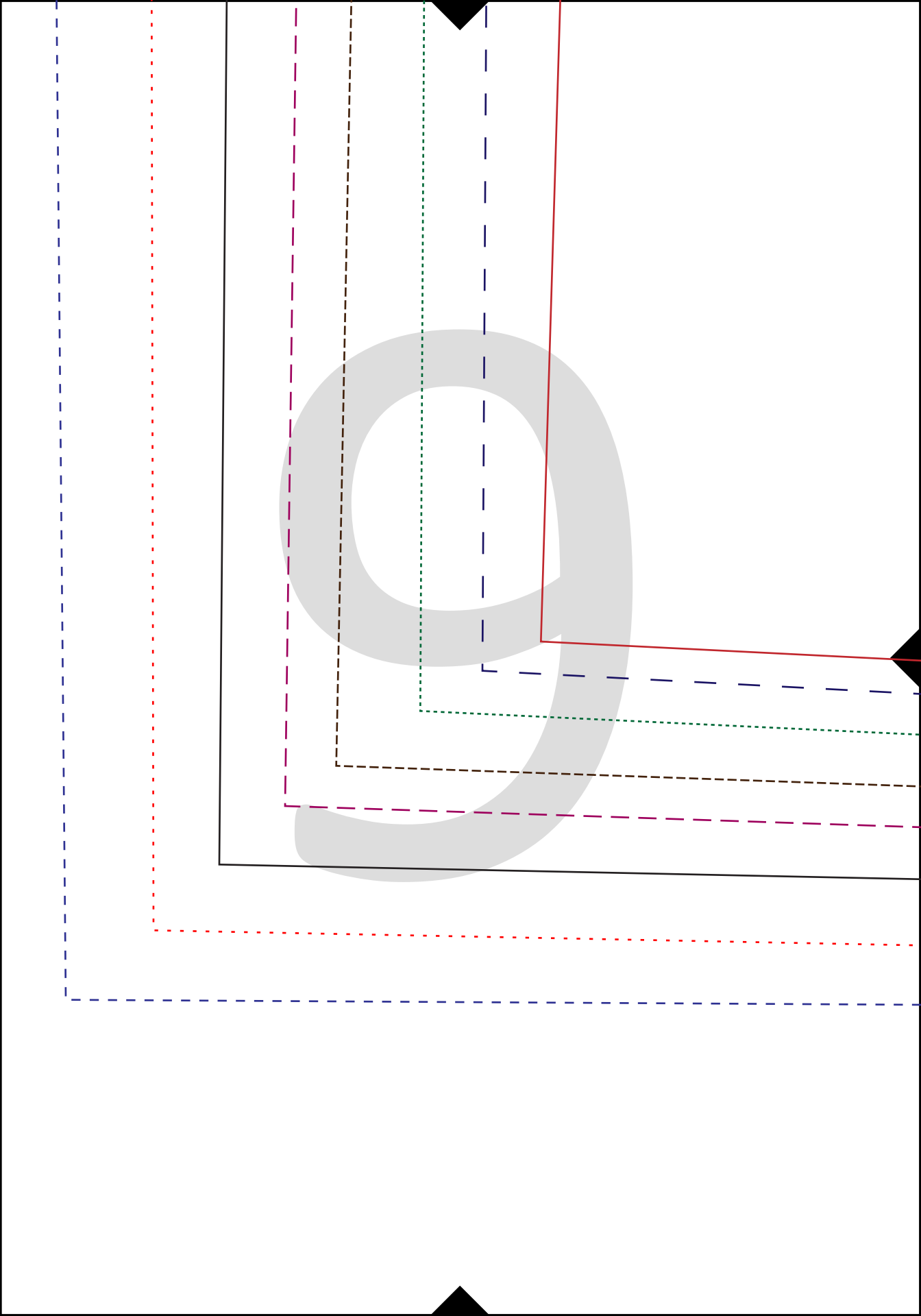
Size Key

- 2 
- 3 
- 4 

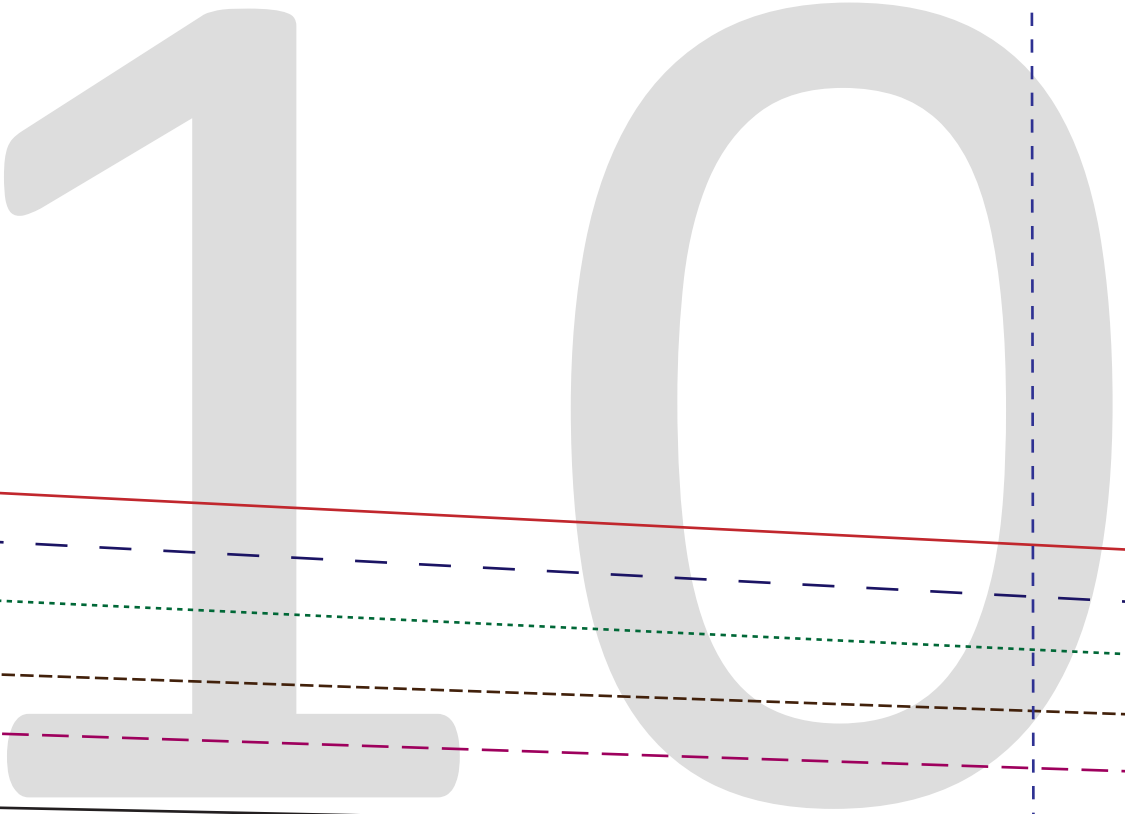


Fold

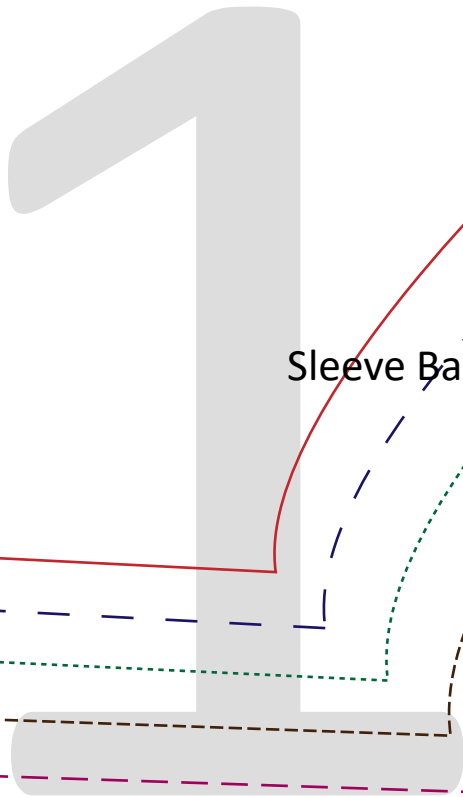
LIFE SEW SAVORY
Neck Facing
Cut 1 on fold



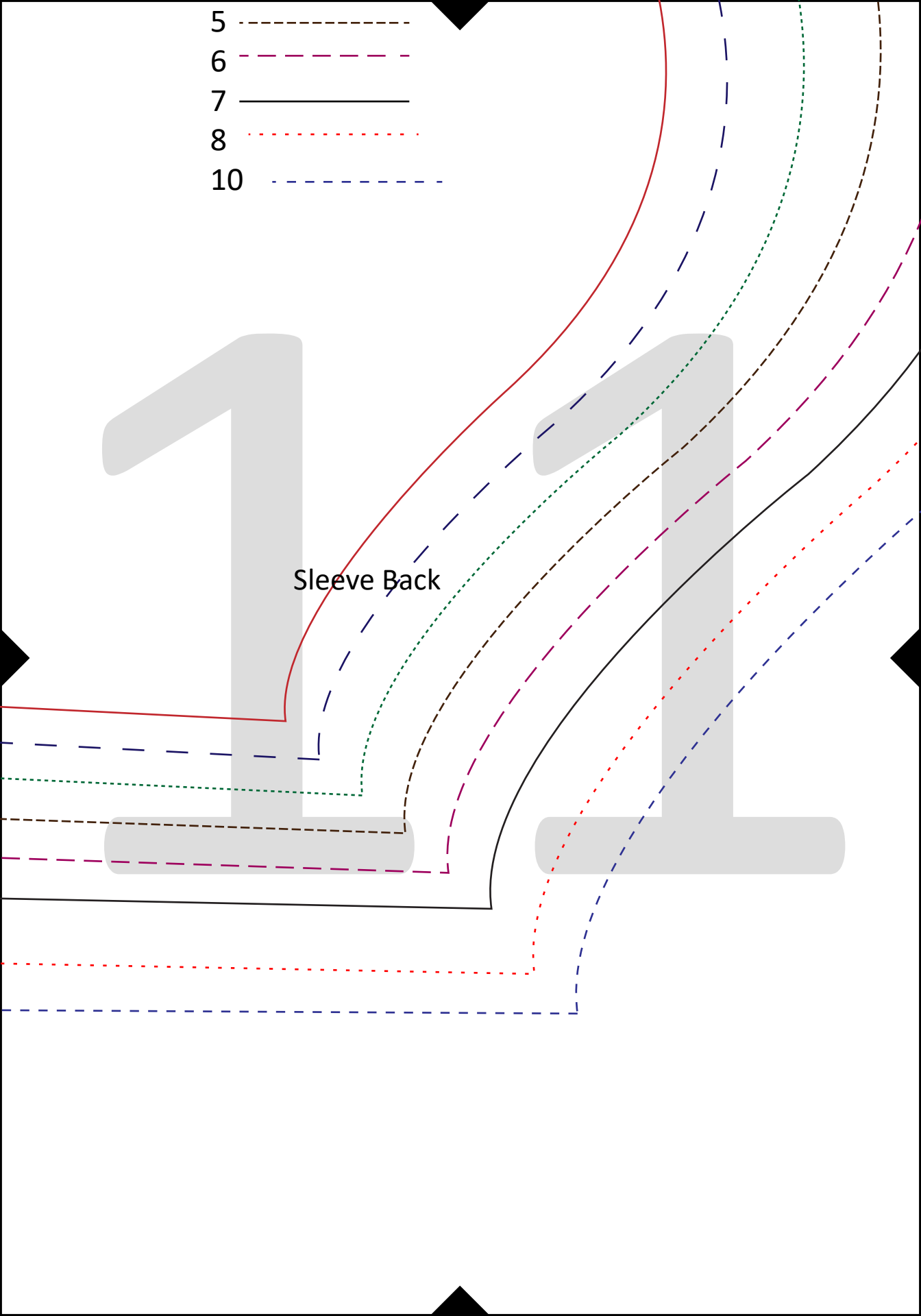
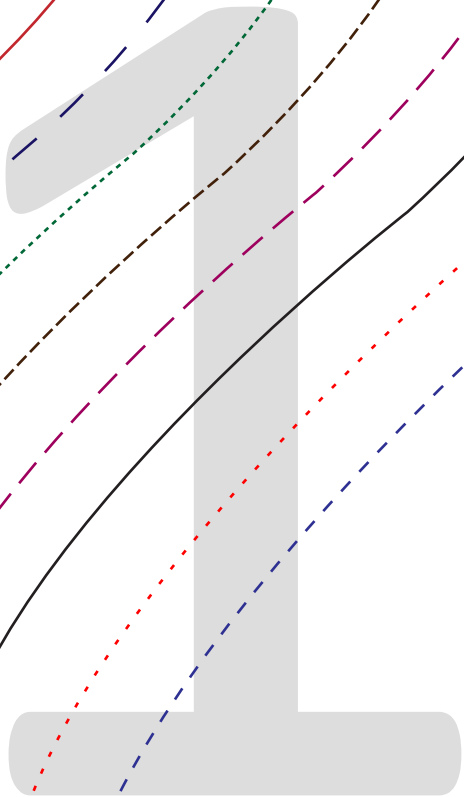
sleeve cut line

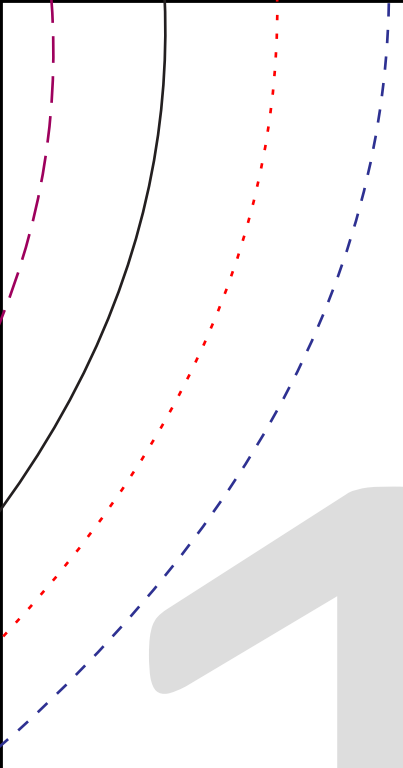


- 5 - - - - -
- 6 - - - - -
- 7 ————
- 8 ······
- 10 - - - - -



Sleeve Back





1

A tracing guide for the number 1 is shown in the top left corner. It consists of four lines: a solid black line, a dashed red line, a dotted red line, and a dashed blue line, all curving from the top left towards the center. A black arrowhead points to the left on the left edge of the page.

2

A large, light gray number 2 is shown on the right side of the page. A black arrowhead points downwards on the bottom edge of the page.